



## 35 ton Electric Chain Hoist

Lifting capacity: 35 ton

Lifting height: 1-50m, higher lifting height can be customized.

Power supply: 220-550V 50/60Hz 1/3 phase.



# Products Code

**WBH / HHBB - 010 01 S E**

Products Series

Lifting Capacity	
Code	Load(t)
001	0.1
002	0.2
003	0.3
004	0.4
005	0.5
010	1.0
015	1.5
020	2.0
025	2.5
030	3.0
050	5.0
075	7.5
100	10
150	15
200	20
300	30
350	35

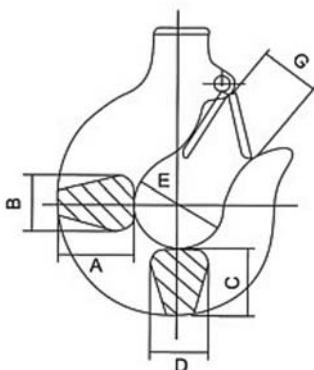
Falls	
Code	Falls
01	1
02	2
03	3
04	4
06	6
08	8
10	10
12	12
16	16

**Speed Type**

- S. Single Speed
- D. Dual Speed

**Hoist Type**

- F. Hook type
- M. Manual trolley type
- E. Motorized trolley type
- L. Low headroom type



Type	Load(t)	T	B	A	B	C	D	E	G
WBH / HHBB	0.2, 0.3, 0.5	T	B	27	18	25	17	35	28
	1	T	B	34	24	30	24	42	32
	2	T	B	46	29	39	30	49	40
	3	T	B	56	35	49	34	59	48
	5	T	B	67	43	57	44	60	48
	7.5	T	B	82	55	80	48	85	80
	10	T	B	82	55	80	48	85	80
	15	T	B	110	78	120	80	120	96
	20, 25	T	B	142	95	155	98	150	115
	30	T	B	160	130	150	130	140	95
	35	T	B	195	150	160	150	160	110

T-top hook / B-load hook

# 35 Ton Electric Chain Hoist



Type	Lifting Speed (m/min)	Lifting Motor			Chain Falls	Chain Spec	Weight (Kg)	Weight Added with 1m Higher
		Power	Rotation Speed (r/min)	Power Supply				
<b>Hook type Electric Chain Hoist</b>								
WBH-35016SF	0.7	3.0*2	1440	200-460V 3	16	φ 11.2	1250	44.8
WBH-35016DF	0.7/0.25	3.0*2/1.0*2	2880/960	Phase 50/60Hz	16	φ 11.2	1310	44.8



## Yuantai Crane Machinery

Crane&Hoist Solution Supplier

### Address

3#-A-2005, Shenglong Plaza, Zhengzhou City, Henan Province, China.

### Tel/Whatsapp/Wechat:

008613653868275

### Fax

0086-371-65760775

### Email

[jason@ytcrane.com](mailto:jason@ytcrane.com)

### Website

[www.ythoist.com](http://www.ythoist.com)

