



Manual trolley type Electric Chain Hoist

Lifting capacity: 0.5-5 tons.

Lifting height: 1-50m.

Power supply: 220-550V 50/60Hz, single-phase or 3 Phases.



Products Code

WBH / HHBB - 010 01 S E

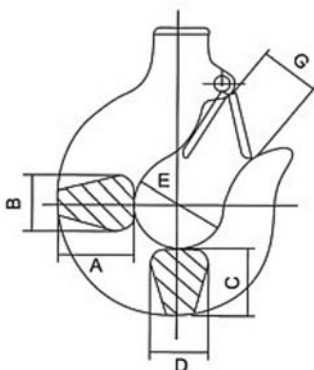
Products Series

Lifting Capacity	
Code	Load(t)
001	0.1
002	0.2
003	0.3
004	0.4
005	0.5
010	1.0
015	1.5
020	2.0
025	2.5
030	3.0
050	5.0
075	7.5
100	10
150	15
200	20
300	30
350	35

Falls	
Code	Falls
01	1
02	2
03	3
04	4
06	6
08	8
10	10
12	12
16	16

Speed Type
 S. Single Speed
 D. Dual Speed

Hoist Type
 F. Hook type
 M. Manual trolley type
 E. Motorized trolley type
 L. Low headroom type



Type	Load(t)	T	B	A	B	C	D	E	G
WBH / HHBB	0.2, 0.3, 0.5	T	B	27	18	25	17	35	28
	1	T	B	34	24	30	24	42	32
	2	T	B	46	29	39	30	49	40
	3	T	B	56	35	49	34	59	48
	5	T	B	67	43	57	44	60	48
	7.5	T	B	82	55	80	48	85	80
	10	T	B	82	55	80	48	85	80
	15	T	B	110	78	120	80	120	96
	20, 25	T	B	142	95	155	98	150	115
	30	T	B	160	130	150	130	140	95
	35	T	B	195	150	160	150	160	110

T-top hook / B-load hook

300Kg-5Ton

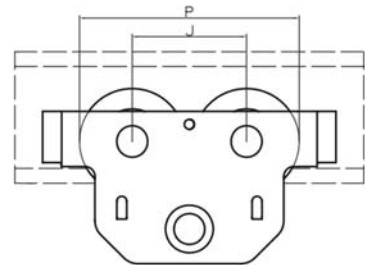
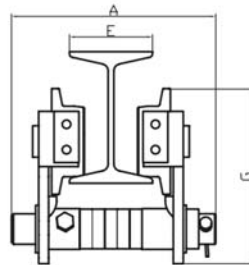
Single Speed Manual Trolley type Electric Chain Hoist



Type	Capacity (t)	Lifting Speed (m/min)	Lifting Motor			Chain Falls	Chain Spec	Weight (Kg)	Weight Added with 1m Higher
			Power	Rotation Speed (r/min)	Power Supply				
WBH-00301SM	0.3	7.1	0.75	1440	200-460V 1/3 Phase 50/60Hz	1	φ6.1	40	0.61
WBH-00501SM	0.5	6.8	0.75	1440		1	φ6.3	53	0.81
WBH-01001SM	1	6.6	1.5	1440		1	φ7.1	67	1.1
WBH-01002SM	1	3.4	0.75	1440		2	φ6.3	67	1.1
WBH-01501SM	1.5	8.8	3.0	1440		1	φ10.0	118	2.3
WBH-02001SM	2	6.6	3.0	1440		1	φ10.0	125	2.3
WBH-02002SM	2	3.3	3.0	1440		2	φ7.1	83	2.3
WBH-02501SM	2.5	5.4	3.0	1440		1	φ11.2	132	2.8
WBH-03001SM	3	5.4	3.0	1440		1	φ11.2	138	2.8
WBH-03002SM	3	4.4	3.0	1440		2	φ10.0	147	4.7
WBH-05002SM	5	2.7	3.0	1440		2	φ11.2	181	5.6

300Kg-5Ton

Manual Trolley



Type		MT-003	MT-005	MT-010	MT-020	MT-030	MT-050
Capacity(t)		0.3	0.5	1	2	3	5
Unit(mm)	A	460	200	200	218	275	275
	G	180	170	170	205	236	280
	J	91	115	115	138	157	178
	E	52-100	52-120	52-120	60-105	60-105	80-180
	P	163	221	221	265	305	332
Minimum Turning Radius(m)		0.6	0.6	0.6	1.0	1.0	1.2



Yuantai Crane Machinery

Crane&Hoist Solution Supplier

Address

3#-A-2005, Shenglong Plaza, Zhengzhou City, Henan Province, China.

Tel/Whatsapp/Wechat:

008613653868275

Fax

0086-371-65760775

Email

jason@ytcrane.com

Website

www.ythoist.com