

Hook type Electric Chain Hoist

Lifting capacity: 0.5-35 tons, above 35 ton can be customized.

Lifting height: 1-50m, higher lifting height can be customized.

Power supply: 220-550V 50/60Hz, 5t and below can be single-phase power.



Products Code

WBH / HHBB - 010 01 S E

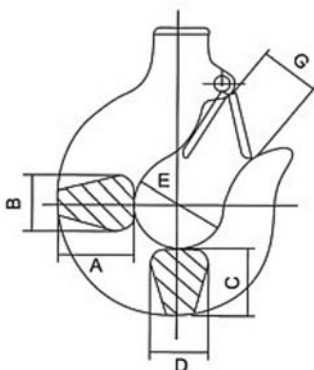
Products Series

Lifting Capacity	
Code	Load(t)
001	0.1
002	0.2
003	0.3
004	0.4
005	0.5
010	1.0
015	1.5
020	2.0
025	2.5
030	3.0
050	5.0
075	7.5
100	10
150	15
200	20
300	30
350	35

Falls	
Code	Falls
01	1
02	2
03	3
04	4
06	6
08	8
10	10
12	12
16	16

Speed Type
 S. Single Speed
 D. Dual Speed

Hoist Type
 F. Hook type
 M. Manual trolley type
 E. Motorized trolley type
 L. Low headroom type



Type	Load(t)	T	B	A	B	C	D	E	G
WBH / HHBB	0.2, 0.3, 0.5	T	B	27	18	25	17	35	28
	1	T	B	34	24	30	24	42	32
	2	T	B	46	29	39	30	49	40
	3	T	B	56	35	49	34	59	48
	5	T	B	67	43	57	44	60	48
	7.5	T	B	82	55	80	48	85	80
	10	T	B	82	55	80	48	85	80
	15	T	B	110	78	120	80	120	96
	20, 25	T	B	142	95	155	98	150	115
	30	T	B	160	130	150	130	140	95
	35	T	B	195	150	160	150	160	110

T-top hook / B-load hook

300Kg-10Ton

Single Speed Hook type Electric Chain Hoist



Type	Capacity (t)	Lifting Speed (m/min)	Lifting Motor			Chain Falls	Chain Spec	Weight (Kg)	Weight Added with 1m Higher
			Power	Rotation Speed (r/min)	Power Supply				
WBH-00301SF	0.3	7.1	0.75	1440	200-460V 1/3 Phase 50/60Hz	1	φ6.1	40	0.61
WBH-00501SF	0.5	6.8	0.75	1440		1	φ6.3	47	0.81
WBH-01001SF	1	6.6	1.5	1440		1	φ7.1	61	1.1
WBH-01002SF	1	3.4	0.75	1440		2	φ6.3	52	1.62
WBH-01501SF	1.5	8.8	3.0	1440		1	φ10.0	108	2.3
WBH-02001SF	2	6.6	3.0	1440		1	φ10.0	115	2.3
WBH-02002SF	2	3.3	1.5	1440		2	φ7.1	73	2.2
WBH-02501SF	2.5	5.4	3.0	1440		1	φ11.2	116	2.8
WBH-03001SF	3	5.4	3.0	1440		1	φ11.2	122	2.8
WBH-03002SF	3	4.4	3.0	1440		2	φ10.0	131	4.7
WBH-03003SF	3	2.2	1.5	1440		3	φ7.1	85	3.3
WBH-05002SF	5	2.7	3.0	1440		2	φ11.2	151	5.6
WBH-07503SF	7.5	1.8	3.0	1440		3	φ11.2	266	8.4
WBH-10004SF	10	2.7	3.0*2	1440	3 Phase 50/60Hz	4	φ11.2	300	8.4

300Kg-10Ton

Double Speed Hook type Electric Chain Hoist



Type	Capacity (t)	Lifting Speed (m/min)	Lifting Motor			Chain Falls	Chain Spec	Weight (Kg)	Weight Added with 1m Higher
			Power	Rotation Speed (r/min)	Power Supply				
WBH-00501DF	0.5	6.9/2.3	0.8/0.27	2890/980	200-460V 1/3 Phase 50/60Hz	1	φ6.3	47	0.81
WBH-01001DF	1	6.9/2.3	1.8/0.6			1	φ7.1	61	1.1
WBH-01002DF	1	3.5/1.2	0.8/0.27			2	φ6.3	52	1.62
WBH-01501DF	1.5	8.9/2.9	3.0/1.0			1	φ10.0	108	2.3
WBH-02001DF	2	6.8/2.3	3.0/1.0			1	φ10.0	115	2.3
WBH-02002DF	2	3.3/1.1	1.8/0.6			2	φ7.1	73	2.2
WBH-02501DF	2.5	5.4/1.8	3.0/1.0			1	φ11.2	116	2.8
WBH-03001DF	3	5.4/1.8	3.0/1.0			1	φ11.2	122	2.8
WBH-03002DF	3	4.5/1.5	3.0/1.0			2	φ10.0	131	4.7
WBH-03003DF	3	2.4/0.8	1.8/0.6			3	φ7.1	55	3.5
WBH-05002DF	5	2.7/0.9	3.0/1.0			2	φ11.2	151	5.6
WBH-07503DF	7.5	1.8/0.6	3.0/1.0		3	φ11.2	266	8.4	
WBH-10004DF	10	2.7/0.9	3.0*2/1.0*2		4	200-460V 3 Phase 50/60Hz	φ11.2	300	11



Yuantai Crane Machinery

Crane&Hoist Solution Supplier

Address

3#-A-2005, Shenglong Plaza, Zhengzhou City, Henan Province, China.

Tel/Whatsapp/Wechat:

008613653868275

Fax

0086-371-65760775

Email

jason@ytcrane.com

Website

www.ythoist.com